

Morphine craving model

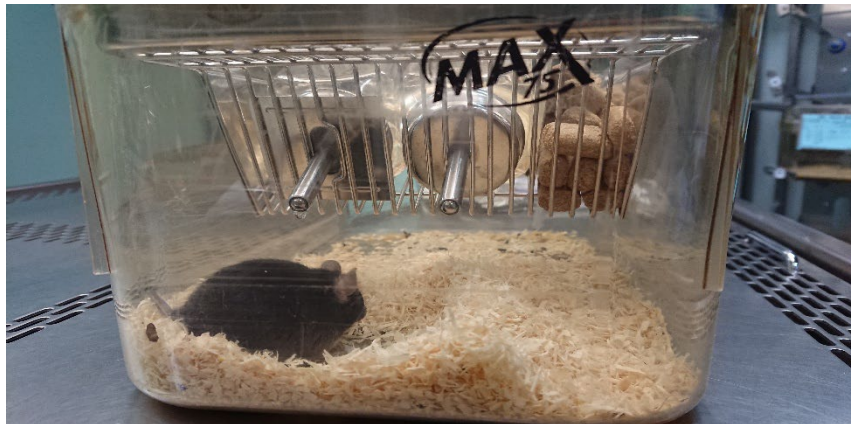
Two-bottle choice assay for morphine consumption and dependence

1. Measure morphine consumption and body weekly.
2. Switch bottle positions every 2 days.

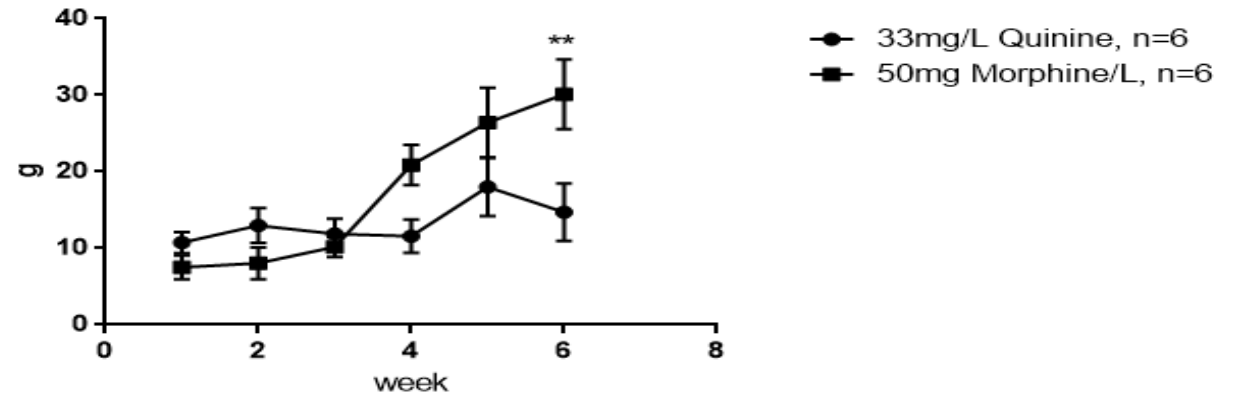
D₋₃ D₀



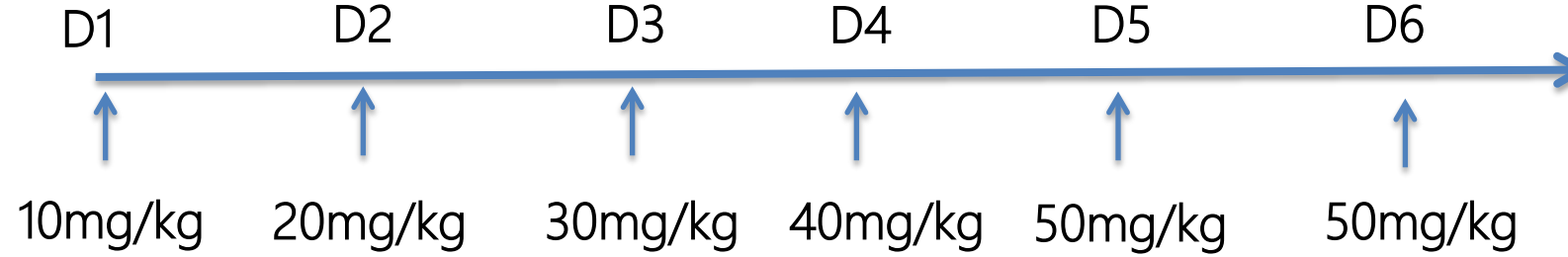
Two-bottle testing:
33mg/L Quinine+0.2% Saccharin
50mg/L Morphine + 0.2% Saccharin



Morphine Craving Test



Morphine Craving Model

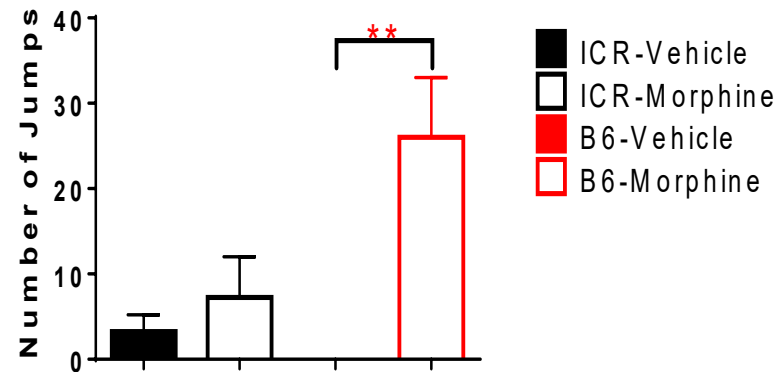


(2 hours after the last morphine injection)

Naloxone (5 mg/kg, ip)

Monitor withdrawal symptoms
(record 20min in HCS room)

- Naloxone (μ -opioid receptors) is an opioid antagonist medication used to block or reverse the effects of opioid drugs.



Creating better treatment options
for the afflicted with addiction